

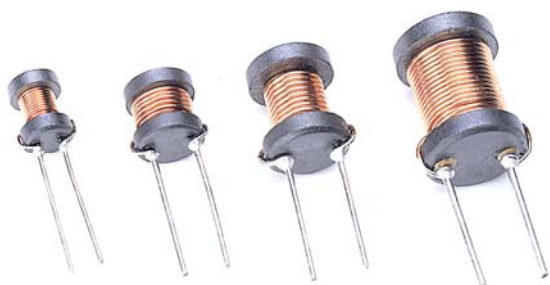
Unshielded Construction - DIP / DR Series

Feature

1. High rated current for circuit design.
2. Design by special lead wire to prevent open circuit failure.
3. Low cost with rugged reliability and performance fixed inductor.

Application

Excellent as DC/DC converter boost or buck inductor.
Also used for filtering application.

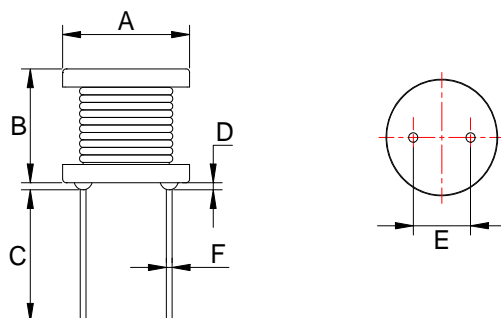


Product Identification

W DR 0406- 2R2 —
1 2 3 4 5

1. Lead-Free part number.
2. Series name.
3. Dimension
4. Inductance. (See Details)
5. Tolerance. (See Details)

Configurations & Dimensions



Series Name	A	B	C	D	E	F
DR0406	6.0 max.	7.5 max.	3.5 min.	2.0 max.	2.0±0.5	0.5 typ.
DR0608	8.0 max.	9.5 max.	3.5 min.	2.0 max.	3.0±0.5	0.65 typ.
DR0810	10.0 max.	11.5 max.	3.5 min.	2.5 max.	5.0±0.5	0.65 / 0.80 typ.
DR0912	11.0 max.	13.5 max.	3.5 min.	3.0 max.	5.0±0.5	0.65 / 0.80 typ.
DR1012	12.0 max.	13.5 max.	3.5 min.	3.0 max.	6.0±0.5	0.8 typ.
DR1016	12.5 max.	18.0 max.	3.5 min.	3.0 max.	6.0±0.5	0.8 typ.

Unit: mm

Unshielded Construction - DIP / DR Series

■ Electrical Characteristics / DR0406

System Number	Part Number	Inductance (μ H)	Test Condition (Volt / Hz)	DC Resistance Max. (m Ω)	Rated Current Max. (mA)
WP02D0101-00	DR0406-1R0 __	1.0	1.0 / 1.0K	30	3,000
WP02D0102-00	DR0406-1R5 __	1.5	1.0 / 1.0K	35	2,800
WP02D0103-00	DR0406-1R8 __	1.8	1.0 / 1.0K	40	2,700
WP02D0104-00	DR0406-2R2 __	2.2	1.0 / 1.0K	45	2,500
WP02D0105-00	DR0406-2R7 __	2.7	1.0 / 1.0K	50	2,500
WP02D0106-00	DR0406-3R3 __	3.3	1.0 / 1.0K	55	2,200
WP02D0107-00	DR0406-3R9 __	3.9	1.0 / 1.0K	55	2,200
WP02D0108-00	DR0406-4R7 __	4.7	1.0 / 1.0K	65	2,000
WP02D0109-00	DR0406-5R6 __	5.6	1.0 / 1.0K	70	1,800
WP02D0110-00	DR0406-6R8 __	6.8	1.0 / 1.0K	80	1,700
WP02D0111-00	DR0406-8R2 __	8.2	1.0 / 1.0K	90	1,500
WP02D0112-00	DR0406-100 __	10	1.0 / 1.0K	110	1,400
WP02D0113-00	DR0406-120 __	12	1.0 / 1.0K	140	1,200
WP02D0114-00	DR0406-150 __	15	1.0 / 1.0K	160	1,000
WP02D0115-00	DR0406-180 __	18	1.0 / 1.0K	180	1,000
WP02D0116-00	DR0406-220 __	22	1.0 / 1.0K	250	900
WP02D0117-00	DR0406-270 __	27	1.0 / 1.0K	370	800
WP02D0118-00	DR0406-330 __	33	1.0 / 1.0K	420	700
WP02D0119-00	DR0406-390 __	39	1.0 / 1.0K	450	700
WP02D0120-00	DR0406-470 __	47	1.0 / 1.0K	500	600
WP02D0121-00	DR0406-560 __	56	1.0 / 1.0K	560	600
WP02D0122-00	DR0406-680 __	68	1.0 / 1.0K	630	550
WP02D0123-00	DR0406-820 __	82	1.0 / 1.0K	770	500
WP02D0124-00	DR0406-101 __	100	1.0 / 1.0K	850	400
WP02D0125-00	DR0406-121 __	120	1.0 / 1.0K	1,300	400
WP02D0126-00	DR0406-151 __	150	1.0 / 1.0K	1,400	300
WP02D0127-00	DR0406-181 __	180	1.0 / 1.0K	2,200	300
WP02D0128-00	DR0406-221 __	220	1.0 / 1.0K	2,500	280
WP02D0129-00	DR0406-271 __	270	1.0 / 1.0K	2,700	250
WP02D0130-00	DR0406-331 __	330	1.0 / 1.0K	3,000	220
WP02D0131-00	DR0406-391 __	390	1.0 / 1.0K	3,400	210
WP02D0132-00	DR0406-471 __	470	1.0 / 1.0K	3,900	200
WP02D0133-00	DR0406-561 __	560	1.0 / 1.0K	5,000	160
WP02D0134-00	DR0406-681 __	680	1.0 / 1.0K	7,000	150
WP02D0135-00	DR0406-821 __	820	1.0 / 1.0K	7,700	140
WP02D0136-00	DR0406-102 __	1000	1.0 / 1.0K	8,700	120

Unshielded Construction - DIP / DR Series

■ Electrical Characteristics / DR0608

System Number	Part Number	Inductance (μ H)	Test Condition (Volt / Hz)	DC Resistance Max. (m Ω)	Rated Current Max. (mA)
WP02D0201-00	DR0608-1R0 __	1.0	1.0 / 1.0K	15	3,000
WP02D0202-00	DR0608-1R5 __	1.5	1.0 / 1.0K	15	2,800
WP02D0203-00	DR0608-1R8 __	1.8	1.0 / 1.0K	15	2,700
WP02D0204-00	DR0608-2R2 __	2.2	1.0 / 1.0K	15	2,600
WP02D0205-00	DR0608-2R7 __	2.7	1.0 / 1.0K	20	2,500
WP02D0206-00	DR0608-3R3 __	3.3	1.0 / 1.0K	20	2,500
WP02D0207-00	DR0608-3R9 __	3.9	1.0 / 1.0K	25	2,500
WP02D0208-00	DR0608-4R7 __	4.7	1.0 / 1.0K	25	2,300
WP02D0209-00	DR0608-5R6 __	5.6	1.0 / 1.0K	30	2,100
WP02D0210-00	DR0608-6R8 __	6.8	1.0 / 1.0K	30	1,800
WP02D0211-00	DR0608-8R2 __	8.2	1.0 / 1.0K	35	1,200
WP02D0212-00	DR0608-100 __	10	1.0 / 1.0K	45	1,000
WP02D0213-00	DR0608-120 __	12	1.0 / 1.0K	50	1,000
WP02D0214-00	DR0608-150 __	15	1.0 / 1.0K	55	900
WP02D0215-00	DR0608-180 __	18	1.0 / 1.0K	90	900
WP02D0216-00	DR0608-220 __	22	1.0 / 1.0K	95	800
WP02D0217-00	DR0608-270 __	27	1.0 / 1.0K	110	750
WP02D0218-00	DR0608-330 __	33	1.0 / 1.0K	125	700
WP02D0219-00	DR0608-390 __	39	1.0 / 1.0K	140	650
WP02D0220-00	DR0608-470 __	47	1.0 / 1.0K	160	600
WP02D0221-00	DR0608-560 __	56	1.0 / 1.0K	180	600
WP02D0222-00	DR0608-680 __	68	1.0 / 1.0K	200	560
WP02D0223-00	DR0608-820 __	82	1.0 / 1.0K	270	480
WP02D0224-00	DR0608-101 __	100	1.0 / 1.0K	310	450
WP02D0225-00	DR0608-121 __	120	1.0 / 1.0K	370	430
WP02D0226-00	DR0608-151 __	150	1.0 / 1.0K	470	400
WP02D0227-00	DR0608-181 __	180	1.0 / 1.0K	540	400
WP02D0228-00	DR0608-221 __	220	1.0 / 1.0K	730	380
WP02D0229-00	DR0608-271 __	270	1.0 / 1.0K	830	320
WP02D0230-00	DR0608-331 __	330	1.0 / 1.0K	950	300
WP02D0231-00	DR0608-391 __	390	1.0 / 1.0K	1,220	250
WP02D0232-00	DR0608-471 __	470	1.0 / 1.0K	1,630	220
WP02D0233-00	DR0608-561 __	560	1.0 / 1.0K	1,800	200
WP02D0234-00	DR0608-681 __	680	1.0 / 1.0K	2,100	180
WP02D0235-00	DR0608-821 __	820	1.0 / 1.0K	2,900	170
WP02D0236-00	DR0608-102 __	1000	1.0 / 1.0K	3,200	150

Unshielded Construction - DIP / DR Series

■ Electrical Characteristics / DR0810

System Number	Part Number	Inductance (μ H)	Test Condition (Volt / Hz)	DC Resistance Max. (m Ω)	Rated Current Max. (mA)
WP02D0301-00	DR0810-1R0 __	1.0	1.0 / 1.0K	15	4,500
WP02D0302-00	DR0810-1R5 __	1.5	1.0 / 1.0K	20	4,500
WP02D0304-00	DR0810-2R2 __	2.2	1.0 / 1.0K	20	4,200
WP02D0305-00	DR0810-2R7 __	2.7	1.0 / 1.0K	20	4,200
WP02D0306-00	DR0810-3R3 __	3.3	1.0 / 1.0K	20	4,000
WP02D0307-00	DR0810-3R9 __	3.9	1.0 / 1.0K	20	4,000
WP02D0308-00	DR0810-4R7 __	4.7	1.0 / 1.0K	25	4,000
WP02D0309-00	DR0810-5R6 __	5.6	1.0 / 1.0K	25	4,000
WP02D0310-00	DR0810-6R8 __	6.8	1.0 / 1.0K	25	4,000
WP02D0311-00	DR0810-8R2 __	8.2	1.0 / 1.0K	35	3,800
WP02D0312-00	DR0810-100 __	10	1.0 / 1.0K	40	3,800
WP02D0313-00	DR0810-120 __	12	1.0 / 1.0K	40	3,200
WP02D0314-00	DR0810-150 __	15	1.0 / 1.0K	45	2,800
WP02D0315-00	DR0810-180 __	18	1.0 / 1.0K	60	2,500
WP02D0316-00	DR0810-220 __	22	1.0 / 1.0K	70	2,100
WP02D0317-00	DR0810-270 __	27	1.0 / 1.0K	85	2,000
WP02D0318-00	DR0810-330 __	33	1.0 / 1.0K	90	1,800
WP02D0319-00	DR0810-390 __	39	1.0 / 1.0K	100	1,600
WP02D0320-00	DR0810-470 __	47	1.0 / 1.0K	110	1,500
WP02D0321-00	DR0810-560 __	56	1.0 / 1.0K	150	1,300
WP02D0322-00	DR0810-680 __	68	1.0 / 1.0K	190	1,000
WP02D0323-00	DR0810-820 __	82	1.0 / 1.0K	210	900
WP02D0324-00	DR0810-101 __	100	1.0 / 1.0K	240	800
WP02D0325-00	DR0810-121 __	120	1.0 / 1.0K	260	800
WP02D0326-00	DR0810-151 __	150	1.0 / 1.0K	310	750
WP02D0327-00	DR0810-181 __	180	1.0 / 1.0K	380	700
WP02D0328-00	DR0810-221 __	220	1.0 / 1.0K	430	650
WP02D0329-00	DR0810-271 __	270	1.0 / 1.0K	490	630
WP02D0330-00	DR0810-331 __	330	1.0 / 1.0K	660	600
WP02D0331-00	DR0810-391 __	390	1.0 / 1.0K	790	580
WP02D0332-00	DR0810-471 __	470	1.0 / 1.0K	910	520
WP02D0333-00	DR0810-561 __	560	1.0 / 1.0K	1,130	500
WP02D0334-00	DR0810-681 __	680	1.0 / 1.0K	1,300	400
WP02D0335-00	DR0810-821 __	820	1.0 / 1.0K	1,530	300
WP02D0336-00	DR0810-102 __	1000	1.0 / 1.0K	1,800	270

Unshielded Construction - DIP / DR Series

■ Electrical Characteristics / DR0912

System Number	Part Number	Inductance (μ H)	Test Condition (Volt / Hz)	DC Resistance Max. (m Ω)	Rated Current Max. (mA)
WP02D0401-00	DR0912-1R0 __	1.0	1.0 / 1.0K	15	5,000
WP02D0402-00	DR0912-1R5 __	1.5	1.0 / 1.0K	15	5,000
WP02D0404-00	DR0912-2R2 __	2.2	1.0 / 1.0K	15	5,000
WP02D0405-00	DR0912-2R7 __	2.7	1.0 / 1.0K	15	5,000
WP02D0406-00	DR0912-3R3 __	3.3	1.0 / 1.0K	20	4,800
WP02D0407-00	DR0912-3R9 __	3.9	1.0 / 1.0K	20	4,800
WP02D0408-00	DR0912-4R7 __	4.7	1.0 / 1.0K	20	4,500
WP02D0409-00	DR0912-5R6 __	5.6	1.0 / 1.0K	25	4,000
WP02D0410-00	DR0912-6R8 __	6.8	1.0 / 1.0K	25	3,900
WP02D0411-00	DR0912-8R2 __	8.2	1.0 / 1.0K	25	3,500
WP02D0412-00	DR0912-100 __	10	1.0 / 1.0K	30	3,400
WP02D0413-00	DR0912-120 __	12	1.0 / 1.0K	30	3,200
WP02D0414-00	DR0912-150 __	15	1.0 / 1.0K	40	3,000
WP02D0415-00	DR0912-180 __	18	1.0 / 1.0K	45	2,800
WP02D0416-00	DR0912-220 __	22	1.0 / 1.0K	50	2,700
WP02D0417-00	DR0912-270 __	27	1.0 / 1.0K	55	2,500
WP02D0418-00	DR0912-330 __	33	1.0 / 1.0K	55	2,500
WP02D0419-00	DR0912-390 __	39	1.0 / 1.0K	60	2,000
WP02D0420-00	DR0912-470 __	47	1.0 / 1.0K	70	1,800
WP02D0421-00	DR0912-560 __	56	1.0 / 1.0K	80	1,700
WP02D0422-00	DR0912-680 __	68	1.0 / 1.0K	90	1,500
WP02D0423-00	DR0912-820 __	82	1.0 / 1.0K	110	1,400
WP02D0424-00	DR0912-101 __	100	1.0 / 1.0K	160	1,200
WP02D0425-00	DR0912-121 __	120	1.0 / 1.0K	170	1,100
WP02D0426-00	DR0912-151 __	150	1.0 / 1.0K	200	1,000
WP02D0427-00	DR0912-181 __	180	1.0 / 1.0K	220	900
WP02D0428-00	DR0912-221 __	220	1.0 / 1.0K	260	800
WP02D0429-00	DR0912-271 __	270	1.0 / 1.0K	390	700
WP02D0430-00	DR0912-331 __	330	1.0 / 1.0K	450	500
WP02D0431-00	DR0912-391 __	390	1.0 / 1.0K	490	450
WP02D0432-00	DR0912-471 __	470	1.0 / 1.0K	620	430
WP02D0433-00	DR0912-561 __	560	1.0 / 1.0K	640	400
WP02D0434-00	DR0912-681 __	680	1.0 / 1.0K	790	380
WP02D0435-00	DR0912-821 __	820	1.0 / 1.0K	1,340	350
WP02D0436-00	DR0912-102 __	1000	1.0 / 1.0K	1,820	300

Unshielded Construction - DIP / DR Series

■ Electrical Characteristics / DR1012

System Number	Part Number	Inductance (μ H)	Test Condition (Volt / Hz)	DC Resistance Max. (m Ω)	Rated Current Max. (mA)
WP02D0501-00	DR1012-1R0 __	1.0	1.0 / 1.0K	10	6,000
WP02D0502-00	DR1012-1R5 __	1.5	1.0 / 1.0K	10	6,000
WP02D0503-00	DR1012-1R8 __	1.8	1.0 / 1.0K	15	6,000
WP02D0505-00	DR1012-2R7 __	2.7	1.0 / 1.0K	15	5,500
WP02D0506-00	DR1012-3R3 __	3.3	1.0 / 1.0K	15	5,500
WP02D0507-00	DR1012-3R9 __	3.9	1.0 / 1.0K	20	5,000
WP02D0508-00	DR1012-4R7 __	4.7	1.0 / 1.0K	20	5,000
WP02D0509-00	DR1012-5R6 __	5.6	1.0 / 1.0K	25	4,800
WP02D0510-00	DR1012-6R8 __	6.8	1.0 / 1.0K	25	4,800
WP02D0511-00	DR1012-8R2 __	8.2	1.0 / 1.0K	25	4,500
WP02D0512-00	DR1012-100 __	10	1.0 / 1.0K	25	4,500
WP02D0513-00	DR1012-120 __	12	1.0 / 1.0K	25	4,300
WP02D0514-00	DR1012-150 __	15	1.0 / 1.0K	35	4,300
WP02D0515-00	DR1012-180 __	18	1.0 / 1.0K	40	4,000
WP02D0516-00	DR1012-220 __	22	1.0 / 1.0K	45	3,700
WP02D0517-00	DR1012-270 __	27	1.0 / 1.0K	45	3,500
WP02D0518-00	DR1012-330 __	33	1.0 / 1.0K	55	3,000
WP02D0519-00	DR1012-390 __	39	1.0 / 1.0K	60	2,500
WP02D0520-00	DR1012-470 __	47	1.0 / 1.0K	80	2,300
WP02D0521-00	DR1012-560 __	56	1.0 / 1.0K	85	2,000
WP02D0522-00	DR1012-680 __	68	1.0 / 1.0K	95	2,000
WP02D0523-00	DR1012-820 __	82	1.0 / 1.0K	110	1,800
WP02D0524-00	DR1012-101 __	100	1.0 / 1.0K	140	1,700
WP02D0525-00	DR1012-121 __	120	1.0 / 1.0K	160	1,500
WP02D0526-00	DR1012-151 __	150	1.0 / 1.0K	180	1,400
WP02D0527-00	DR1012-181 __	180	1.0 / 1.0K	250	1,300
WP02D0528-00	DR1012-221 __	220	1.0 / 1.0K	280	1,000
WP02D0529-00	DR1012-271 __	270	1.0 / 1.0K	420	900
WP02D0530-00	DR1012-331 __	330	1.0 / 1.0K	540	800
WP02D0531-00	DR1012-391 __	390	1.0 / 1.0K	600	800
WP02D0532-00	DR1012-471 __	470	1.0 / 1.0K	660	700
WP02D0533-00	DR1012-561 __	560	1.0 / 1.0K	740	600
WP02D0534-00	DR1012-681 __	680	1.0 / 1.0K	840	500
WP02D0535-00	DR1012-821 __	820	1.0 / 1.0K	1,080	500
WP02D0536-00	DR1012-102 __	1000	1.0 / 1.0K	1,390	500

Unshielded Construction - DIP / DR Series

■ Electrical Characteristics / DR1016

System Number	Part Number	Inductance (μ H)	Test Condition (Volt / Hz)	DC Resistance Max. (m Ω)	Rated Current Max. (mA)
WP02D0601-00	DR1016-1R0 __	1.0	1.0 / 1.0K	10	9,000
WP02D0602-00	DR1016-1R5 __	1.5	1.0 / 1.0K	15	9,000
WP02D0603-00	DR1016-1R8 __	1.8	1.0 / 1.0K	15	9,000
WP02D0605-00	DR1016-2R7 __	2.7	1.0 / 1.0K	15	9,000
WP02D0606-00	DR1016-3R3 __	3.3	1.0 / 1.0K	15	8,500
WP02D0607-00	DR1016-3R9 __	3.9	1.0 / 1.0K	15	8,000
WP02D0608-00	DR1016-4R7 __	4.7	1.0 / 1.0K	20	7,500
WP02D0609-00	DR1016-5R6 __	5.6	1.0 / 1.0K	25	7,500
WP02D0610-00	DR1016-6R8 __	6.8	1.0 / 1.0K	25	7,500
WP02D0611-00	DR1016-8R2 __	8.2	1.0 / 1.0K	25	7,200
WP02D0612-00	DR1016-100 __	10	1.0 / 1.0K	30	7,200
WP02D0613-00	DR1016-120 __	12	1.0 / 1.0K	30	7,000
WP02D0614-00	DR1016-150 __	15	1.0 / 1.0K	35	6,500
WP02D0615-00	DR1016-180 __	18	1.0 / 1.0K	35	6,300
WP02D0616-00	DR1016-220 __	22	1.0 / 1.0K	45	5,500
WP02D0617-00	DR1016-270 __	27	1.0 / 1.0K	50	4,500
WP02D0618-00	DR1016-330 __	33	1.0 / 1.0K	70	4,000
WP02D0619-00	DR1016-390 __	39	1.0 / 1.0K	70	3,800
WP02D0620-00	DR1016-470 __	47	1.0 / 1.0K	70	3,600
WP02D0621-00	DR1016-560 __	56	1.0 / 1.0K	80	3,200
WP02D0622-00	DR1016-680 __	68	1.0 / 1.0K	90	3,000
WP02D0623-00	DR1016-820 __	82	1.0 / 1.0K	95	2,600
WP02D0624-00	DR1016-101 __	100	1.0 / 1.0K	120	2,500
WP02D0625-00	DR1016-121 __	120	1.0 / 1.0K	140	2,300
WP02D0626-00	DR1016-151 __	150	1.0 / 1.0K	170	2,100
WP02D0627-00	DR1016-181 __	180	1.0 / 1.0K	190	2,000
WP02D0628-00	DR1016-221 __	220	1.0 / 1.0K	250	1,800
WP02D0629-00	DR1016-271 __	270	1.0 / 1.0K	340	1,500
WP02D0630-00	DR1016-331 __	330	1.0 / 1.0K	450	1,500
WP02D0631-00	DR1016-391 __	390	1.0 / 1.0K	510	1,300
WP02D0632-00	DR1016-471 __	470	1.0 / 1.0K	560	1,200
WP02D0633-00	DR1016-561 __	560	1.0 / 1.0K	640	1,000
WP02D0634-00	DR1016-681 __	680	1.0 / 1.0K	710	1,000
WP02D0635-00	DR1016-821 __	820	1.0 / 1.0K	1,010	900
WP02D0636-00	DR1016-102 __	1000	1.0 / 1.0K	1,200	800