

Unshielded Construction - DIP / DRF Series



Feature

1. High rated current for circuit design.
2. Design by special lead wire to prevent open circuit failure.
3. Low cost with rugged reliability and performance fixed inductor.

Application

Excellent as DC/DC converter boost or buck inductor.

Also used for filtering application.

Product Identification

W DRF 0805- 100 —
1 2 3 4 5

1. Lead-Free part number.

2. Series name.

3. Dimension

4. Inductance. (See Details)

5. Tolerance. (See Details)

Configurations & Dimensions

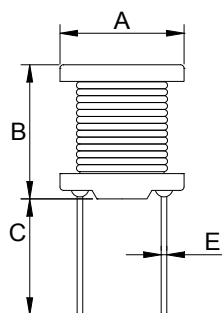


Fig1

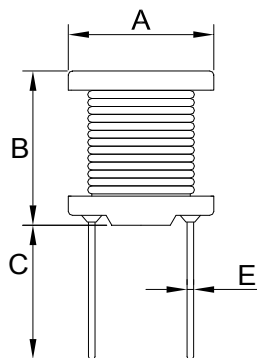
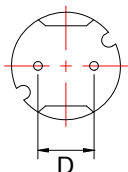
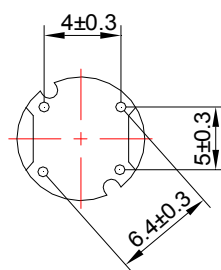


Fig2



Series Name	A	B	C	D	φ E	Fig
DRF0605	6.0±0.5	5.0±0.5	3.5 min.	4.0±0.5	0.5 typ.	1
DRF0606	6.0±0.5	6.5±0.5	3.5 min.	4.0±0.5	0.5 typ.	1
DRF0805	7.8±0.5	5.5±0.5	3.5 min.	5.0±0.5	0.65 typ.	1
DRF0807	7.8±0.5	7.5±0.5	3.5 min.	5.0±0.5	0.65 typ.	1
DRF0809	7.8±0.5	9.5±0.5	3.5 min.	5.0±0.5	0.65 typ.	1
DRF1006	10.0±0.5	6.0±0.5	3.5 min.	—	0.65 typ.	2
DRF1008	10.0±0.5	8.0±0.5	3.5 min.	—	0.65 typ.	2
DRF1010	10.0±0.5	10.0±0.5	3.5 min.	—	0.65 typ.	2
DRF1014	10.0±0.5	14.4±0.5	3.5 min.	5.0±0.5	0.80 typ.	1

Unit: mm

Unshielded Construction - DIP / DRF Series

■ Electrical Characteristics / DRF0605

System Number	Part Number	Inductance (μ H)	Test Condition (Volt / Hz)	DC Resistance Max. (m Ω)	Rated Current Max. (mA)
WP03D0101-00	DRF0605-220 __	22	1.0 / 2.52M	180	900
WP03D0102-00	DRF0605-270 __	27	1.0 / 2.52M	210	810
WP03D0103-00	DRF0605-330 __	33	1.0 / 2.52M	270	740
WP03D0104-00	DRF0605-390 __	39	1.0 / 2.52M	290	680
WP03D0105-00	DRF0605-470 __	47	1.0 / 2.52M	340	620
WP03D0106-00	DRF0605-560 __	56	1.0 / 2.52M	420	570
WP03D0107-00	DRF0605-680 __	68	1.0 / 2.52M	480	510
WP03D0108-00	DRF0605-820 __	82	1.0 / 2.52M	550	470
WP03D0109-00	DRF0605-101 __	100	1.0 / 1.0K	680	420
WP03D0110-00	DRF0605-121 __	120	1.0 / 1.0K	770	390
WP03D0111-00	DRF0605-151 __	150	1.0 / 1.0K	950	350
WP03D0112-00	DRF0605-181 __	180	1.0 / 1.0K	1,150	320
WP03D0113-00	DRF0605-221 __	220	1.0 / 1.0K	1,300	290
WP03D0114-00	DRF0605-271 __	270	1.0 / 1.0K	1,550	260
WP03D0115-00	DRF0605-331 __	330	1.0 / 1.0K	2,180	230
WP03D0116-00	DRF0605-391 __	390	1.0 / 1.0K	2,470	210
WP03D0117-00	DRF0605-471 __	470	1.0 / 1.0K	2,920	200
WP03D0118-00	DRF0605-561 __	560	1.0 / 1.0K	3,970	180
WP03D0119-00	DRF0605-681 __	680	1.0 / 1.0K	4,570	160
WP03D0120-00	DRF0605-821 __	820	1.0 / 1.0K	5,280	150
WP03D0121-00	DRF0605-102 __	1000	1.0 / 1.0K	7,060	130

Unshielded Construction - DIP / DRF Series

■ Electrical Characteristics / DRF0606

System Number	Part Number	Inductance (μ H)	Test Condition (Volt / Hz)	DC Resistance Max. (m Ω)	Rated Current Max. (mA)
WP03D0201-00	DRF0606-220 __	22	1.0 / 2.52M	110	1,270
WP03D0202-00	DRF0606-270 __	27	1.0 / 2.52M	140	1,140
WP03D0203-00	DRF0606-330 __	33	1.0 / 2.52M	170	1,030
WP03D0204-00	DRF0606-390 __	39	1.0 / 2.52M	190	950
WP03D0205-00	DRF0606-470 __	47	1.0 / 2.52M	230	870
WP03D0206-00	DRF0606-560 __	56	1.0 / 2.52M	260	800
WP03D0207-00	DRF0606-680 __	68	1.0 / 2.52M	280	720
WP03D0208-00	DRF0606-820 __	82	1.0 / 2.52M	390	660
WP03D0209-00	DRF0606-101 __	100	1.0 / 1.0K	430	590
WP03D0210-00	DRF0606-121 __	120	1.0 / 1.0K	540	540
WP03D0211-00	DRF0606-151 __	150	1.0 / 1.0K	640	480
WP03D0212-00	DRF0606-181 __	180	1.0 / 1.0K	740	440
WP03D0213-00	DRF0606-221 __	220	1.0 / 1.0K	960	400
WP03D0214-00	DRF0606-271 __	270	1.0 / 1.0K	1,120	360
WP03D0215-00	DRF0606-331 __	330	1.0 / 1.0K	1,480	330
WP03D0216-00	DRF0606-391 __	390	1.0 / 1.0K	1,660	300
WP03D0217-00	DRF0606-471 __	470	1.0 / 1.0K	1,910	270
WP03D0218-00	DRF0606-561 __	560	1.0 / 1.0K	2,310	250
WP03D0219-00	DRF0606-681 __	680	1.0 / 1.0K	2,670	230
WP03D0220-00	DRF0606-821 __	820	1.0 / 1.0K	3,100	210
WP03D0221-00	DRF0606-102 __	1000	1.0 / 1.0K	4,450	190

Unshielded Construction - DIP / DRF Series

■ Electrical Characteristics / DRF0805

System Number	Part Number	Inductance (μ H)	Test Condition (Volt / Hz)	DC Resistance Max. (m Ω)	Rated Current Max. (mA)
WP03D0322-00	DRF0805-100 __	10	1.0 / 2.52M	70	2,500
WP03D0323-00	DRF0805-120 __	12	1.0 / 2.52M	80	2,400
WP03D0324-00	DRF0805-150 __	15	1.0 / 2.52M	90	2,100
WP03D0325-00	DRF0805-180 __	18	1.0 / 2.52M	100	2,000
WP03D0301-00	DRF0805-220 __	22	1.0 / 2.52M	120	1,700
WP03D0302-00	DRF0805-270 __	27	1.0 / 2.52M	140	1,600
WP03D0303-00	DRF0805-330 __	33	1.0 / 2.52M	170	1,400
WP03D0304-00	DRF0805-390 __	39	1.0 / 2.52M	210	1,300
WP03D0305-00	DRF0805-470 __	47	1.0 / 2.52M	240	1,200
WP03D0306-00	DRF0805-560 __	56	1.0 / 2.52M	310	1,100
WP03D0307-00	DRF0805-680 __	68	1.0 / 2.52M	340	1,000
WP03D0308-00	DRF0805-820 __	82	1.0 / 2.52M	400	930
WP03D0309-00	DRF0805-101 __	100	1.0 / 1.0K	520	810
WP03D0310-00	DRF0805-121 __	120	1.0 / 1.0K	590	760
WP03D0311-00	DRF0805-151 __	150	1.0 / 1.0K	710	670
WP03D0312-00	DRF0805-181 __	180	1.0 / 1.0K	890	620
WP03D0313-00	DRF0805-221 __	220	1.0 / 1.0K	1,040	540
WP03D0314-00	DRF0805-271 __	270	1.0 / 1.0K	1,280	490
WP03D0315-00	DRF0805-331 __	330	1.0 / 1.0K	1,470	440
WP03D0316-00	DRF0805-391 __	390	1.0 / 1.0K	1,670	410
WP03D0317-00	DRF0805-471 __	470	1.0 / 1.0K	1,950	380
WP03D0318-00	DRF0805-561 __	560	1.0 / 1.0K	2,830	350
WP03D0319-00	DRF0805-681 __	680	1.0 / 1.0K	3,250	320
WP03D0320-00	DRF0805-821 __	820	1.0 / 1.0K	3,820	310
WP03D0321-00	DRF0805-102 __	1000	1.0 / 1.0K	5,280	250

Unshielded Construction - DIP / DRF Series

■ Electrical Characteristics / DRF0807

System Number	Part Number	Inductance (μ H)	Test Condition (Volt / Hz)	DC Resistance Max. (m Ω)	Rated Current Max. (mA)
WP03D0422-00	DRF0807-100 __	10	1.0 / 2.52M	50	2,900
WP03D0423-00	DRF0807-120 __	12	1.0 / 2.52M	60	2,500
WP03D0424-00	DRF0807-150 __	15	1.0 / 2.52M	70	2,200
WP03D0425-00	DRF0807-180 __	18	1.0 / 2.52M	80	1,900
WP03D0401-00	DRF0807-220 __	22	1.0 / 2.52M	90	1,800
WP03D0402-00	DRF0807-270 __	27	1.0 / 2.52M	110	1,700
WP03D0403-00	DRF0807-330 __	33	1.0 / 2.52M	130	1,500
WP03D0404-00	DRF0807-390 __	39	1.0 / 2.52M	140	1,300
WP03D0405-00	DRF0807-470 __	47	1.0 / 2.52M	150	1,300
WP03D0406-00	DRF0807-560 __	56	1.0 / 2.52M	180	1,200
WP03D0407-00	DRF0807-680 __	68	1.0 / 2.52M	200	1,100
WP03D0408-00	DRF0807-820 __	82	1.0 / 2.52M	240	1,000
WP03D0409-00	DRF0807-101 __	100	1.0 / 1.0K	280	890
WP03D0410-00	DRF0807-121 __	120	1.0 / 1.0K	360	810
WP03D0411-00	DRF0807-151 __	150	1.0 / 1.0K	420	720
WP03D0412-00	DRF0807-181 __	180	1.0 / 1.0K	570	660
WP03D0413-00	DRF0807-221 __	220	1.0 / 1.0K	630	570
WP03D0414-00	DRF0807-271 __	270	1.0 / 1.0K	880	510
WP03D0415-00	DRF0807-331 __	330	1.0 / 1.0K	1,050	460
WP03D0416-00	DRF0807-391 __	390	1.0 / 1.0K	1,170	440
WP03D0417-00	DRF0807-471 __	470	1.0 / 1.0K	1,340	410
WP03D0418-00	DRF0807-561 __	560	1.0 / 1.0K	1,720	360
WP03D0419-00	DRF0807-681 __	680	1.0 / 1.0K	1,960	330
WP03D0420-00	DRF0807-821 __	820	1.0 / 1.0K	2,560	300
WP03D0421-00	DRF0807-102 __	1000	1.0 / 1.0K	2,940	270

Unshielded Construction - DIP / DRF Series

■ Electrical Characteristics / DRF0809

System Number	Part Number	Inductance (μ H)	Test Condition (Volt / Hz)	DC Resistance Max. (m Ω)	Rated Current Max. (mA)
WP03D0522-00	DRF0809-100 __	10	1.0 / 2.52M	40	2,600
WP03D0523-00	DRF0809-120 __	12	1.0 / 2.52M	40	2,600
WP03D0524-00	DRF0809-150 __	15	1.0 / 2.52M	50	2,100
WP03D0525-00	DRF0809-180 __	18	1.0 / 2.52M	50	2,000
WP03D0501-00	DRF0809-220 __	22	1.0 / 2.52M	60	1,700
WP03D0502-00	DRF0809-270 __	27	1.0 / 2.52M	60	1,600
WP03D0503-00	DRF0809-330 __	33	1.0 / 2.52M	70	1,400
WP03D0504-00	DRF0809-390 __	39	1.0 / 2.52M	80	1,400
WP03D0505-00	DRF0809-470 __	47	1.0 / 2.52M	100	1,300
WP03D0506-00	DRF0809-560 __	56	1.0 / 2.52M	110	1,200
WP03D0507-00	DRF0809-680 __	68	1.0 / 2.52M	140	1,100
WP03D0508-00	DRF0809-820 __	82	1.0 / 2.52M	160	1,000
WP03D0509-00	DRF0809-101 __	100	1.0 / 1.0K	190	900
WP03D0510-00	DRF0809-121 __	120	1.0 / 1.0K	220	820
WP03D0511-00	DRF0809-151 __	150	1.0 / 1.0K	270	740
WP03D0512-00	DRF0809-181 __	180	1.0 / 1.0K	310	710
WP03D0513-00	DRF0809-221 __	220	1.0 / 1.0K	380	640
WP03D0514-00	DRF0809-271 __	270	1.0 / 1.0K	530	570
WP03D0515-00	DRF0809-331 __	330	1.0 / 1.0K	610	510
WP03D0516-00	DRF0809-391 __	390	1.0 / 1.0K	690	480
WP03D0517-00	DRF0809-471 __	470	1.0 / 1.0K	890	430
WP03D0518-00	DRF0809-561 __	560	1.0 / 1.0K	1,010	400
WP03D0519-00	DRF0809-681 __	680	1.0 / 1.0K	1,180	350
WP03D0520-00	DRF0809-821 __	820	1.0 / 1.0K	1,570	320
WP03D0521-00	DRF0809-102 __	1000	1.0 / 1.0K	1,840	300

Unshielded Construction - DIP / DRF Series

■ Electrical Characteristics / DRF1006

System Number	Part Number	Inductance (μ H)	Test Condition (Volt / Hz)	DC Resistance Max. (m Ω)	Rated Current Max. (mA)
WP03D0622-00	DRF1006-100 __	10	1.0 / 2.52M	40	3,600
WP03D0623-00	DRF1006-120 __	12	1.0 / 2.52M	44	3,300
WP03D0624-00	DRF1006-150 __	15	1.0 / 2.52M	58	2,900
WP03D0625-00	DRF1006-180 __	18	1.0 / 2.52M	64	2,700
WP03D0601-00	DRF1006-220 __	22	1.0 / 2.52M	88	2,400
WP03D0602-00	DRF1006-270 __	27	1.0 / 2.52M	100	2,200
WP03D0603-00	DRF1006-330 __	33	1.0 / 2.52M	110	2,000
WP03D0604-00	DRF1006-390 __	39	1.0 / 2.52M	140	1,800
WP03D0605-00	DRF1006-470 __	47	1.0 / 2.52M	160	1,700
WP03D0606-00	DRF1006-560 __	56	1.0 / 2.52M	190	1,500
WP03D0607-00	DRF1006-680__	68	1.0 / 2.52M	220	1,400
WP03D0608-00	DRF1006-820 __	82	1.0 / 2.52M	290	1,300
WP03D0609-00	DRF1006-101__	100	1.0 / 1.0K	320	1,300
WP03D0610-00	DRF1006-121 __	120	1.0 / 1.0K	380	1,200
WP03D0611-00	DRF1006-151__	150	1.0 / 1.0K	500	1,000
WP03D0612-00	DRF1006-181 __	180	1.0 / 1.0K	560	840
WP03D0613-00	DRF1006-221 __	220	1.0 / 1.0K	780	760
WP03D0614-00	DRF1006-271 __	270	1.0 / 1.0K	920	690
WP03D0615-00	DRF1006-331 __	330	1.0 / 1.0K	1,100	620
WP03D0616-00	DRF1006-391 __	390	1.0 / 1.0K	1,300	570
WP03D0617-00	DRF1006-471 __	470	1.0 / 1.0K	1,500	520
WP03D0618-00	DRF1006-561 __	560	1.0 / 1.0K	1,900	480
WP03D0619-00	DRF1006-681 __	680	1.0 / 1.0K	2,200	430
WP03D0620-00	DRF1006-821 __	820	1.0 / 1.0K	2,600	400
WP03D0621-00	DRF1006-102 __	1000	1.0 / 1.0K	3,200	360

Unshielded Construction - DIP / DRF Series

■ Electrical Characteristics / DRF1008

System Number	Part Number	Inductance (μ H)	Test Condition (Volt / Hz)	DC Resistance Max. (m Ω)	Rated Current Max. (mA)
WP03D0722-00	DRF1008-100 __	10	1.0 / 2.52M	27	4,500
WP03D0723-00	DRF1008-120 __	12	1.0 / 2.52M	31	4,100
WP03D0724-00	DRF1008-150 __	15	1.0 / 2.52M	36	3,700
WP03D0725-00	DRF1008-180 __	18	1.0 / 2.52M	49	3,400
WP03D0701-00	DRF1008-220 __	22	1.0 / 2.52M	55	3,100
WP03D0702-00	DRF1008-270 __	27	1.0 / 2.52M	62	2,800
WP03D0703-00	DRF1008-330 __	33	1.0 / 2.52M	79	2,500
WP03D0704-00	DRF1008-390 __	39	1.0 / 2.52M	87	2,300
WP03D0705-00	DRF1008-470 __	47	1.0 / 2.52M	99	2,100
WP03D0706-00	DRF1008-560 __	56	1.0 / 2.52M	130	1,900
WP03D0707-00	DRF1008-680 __	68	1.0 / 2.52M	140	1,700
WP03D0708-00	DRF1008-820 __	82	1.0 / 2.52M	160	1,600
WP03D0709-00	DRF1008-101 __	100	1.0 / 1.0K	210	1,400
WP03D0710-00	DRF1008-121 __	120	1.0 / 1.0K	240	1,300
WP03D0711-00	DRF1008-151 __	150	1.0 / 1.0K	320	1,200
WP03D0712-00	DRF1008-181 __	180	1.0 / 1.0K	350	1,100
WP03D0713-00	DRF1008-221 __	220	1.0 / 1.0K	450	960
WP03D0714-00	DRF1008-271 __	270	1.0 / 1.0K	610	870
WP03D0715-00	DRF1008-331 __	330	1.0 / 1.0K	690	790
WP03D0716-00	DRF1008-391 __	390	1.0 / 1.0K	780	720
WP03D0717-00	DRF1008-471 __	470	1.0 / 1.0K	1,000	660
WP03D0718-00	DRF1008-561 __	560	1.0 / 1.0K	1,200	600
WP03D0719-00	DRF1008-681 __	680	1.0 / 1.0K	1,400	550
WP03D0720-00	DRF1008-821 __	820	1.0 / 1.0K	1,800	500
WP03D0721-00	DRF1008-102 __	1000	1.0 / 1.0K	2,100	450

Unshielded Construction - DIP / DRF Series

■ Electrical Characteristics / DRF1010

System Number	Part Number	Inductance (μ H)	Test Condition (Volt / Hz)	DC Resistance Max. (m Ω)	Rated Current Max. (mA)
WP03D0822-00	DRF1010-100 __	10	1.0 / 2.52M	22	5,300
WP03D0823-00	DRF1010-120 __	12	1.0 / 2.52M	23	4,900
WP03D0824-00	DRF1010-150 __	15	1.0 / 2.52M	26	4,400
WP03D0825-00	DRF1010-180 __	18	1.0 / 2.52M	33	4,000
WP03D0801-00	DRF1010-220 __	22	1.0 / 2.52M	37	3,600
WP03D0802-00	DRF1010-270 __	27	1.0 / 2.52M	48	3,300
WP03D0803-00	DRF1010-330 __	33	1.0 / 2.52M	55	2,900
WP03D0804-00	DRF1010-390 __	39	1.0 / 2.52M	73	2,700
WP03D0805-00	DRF1010-470 __	47	1.0 / 2.52M	83	2,500
WP03D0806-00	DRF1010-560 __	56	1.0 / 2.52M	92	2,300
WP03D0807-00	DRF1010-680 __	68	1.0 / 2.52M	120	2,100
WP03D0808-00	DRF1010-820 __	82	1.0 / 2.52M	140	1,900
WP03D0809-00	DRF1010-101 __	100	1.0 / 1.0K	160	1,700
WP03D0810-00	DRF1010-121 __	120	1.0 / 1.0K	200	1,500
WP03D0811-00	DRF1010-151 __	150	1.0 / 1.0K	230	1,400
WP03D0812-00	DRF1010-181 __	180	1.0 / 1.0K	310	1,300
WP03D0813-00	DRF1010-221 __	220	1.0 / 1.0K	340	1,100
WP03D0814-00	DRF1010-271 __	270	1.0 / 1.0K	400	1,000
WP03D0815-00	DRF1010-331 __	330	1.0 / 1.0K	520	930
WP03D0816-00	DRF1010-391 __	390	1.0 / 1.0K	650	860
WP03D0817-00	DRF1010-471 __	470	1.0 / 1.0K	710	780
WP03D0818-00	DRF1010-561 __	560	1.0 / 1.0K	1,000	710
WP03D0819-00	DRF1010-681 __	680	1.0 / 1.0K	1,100	650
WP03D0820-00	DRF1010-821 __	820	1.0 / 1.0K	1,300	590
WP03D0821-00	DRF1010-102 __	1000	1.0 / 1.0K	1,700	530

Unshielded Construction - DIP / DRF Series

■ Electrical Characteristics / DRF1014

System Number	Part Number	Inductance (μ H)	Test Condition (Volt / Hz)	DC Resistance Max. (m Ω)	Rated Current Max. (mA)
WP03D0922-00	DRF1014-100 __	10	1.0 / 2.52M	33	4,000
WP03D0923-00	DRF1014-120 __	12	1.0 / 2.52M	35	3,900
WP03D0924-00	DRF1014-150 __	15	1.0 / 2.52M	39	3,700
WP03D0925-00	DRF1014-180 __	18	1.0 / 2.52M	47	3,500
WP03D0901-00	DRF1014-220 __	22	1.0 / 2.52M	51	3,300
WP03D0902-00	DRF1014-270 __	27	1.0 / 2.52M	57	3,100
WP03D0903-00	DRF1014-330 __	33	1.0 / 2.52M	64	2,900
WP03D0904-00	DRF1014-390 __	39	1.0 / 2.52M	74	2,700
WP03D0905-00	DRF1014-470 __	47	1.0 / 2.52M	83	2,500
WP03D0906-00	DRF1014-560 __	56	1.0 / 2.52M	104	2,300
WP03D0907-00	DRF1014-680 __	68	1.0 / 2.52M	117	2,100
WP03D0908-00	DRF1014-820 __	82	1.0 / 2.52M	130	1,900
WP03D0909-00	DRF1014-101 __	100	1.0 / 1.0K	143	1,700
WP03D0910-00	DRF1014-121 __	120	1.0 / 1.0K	195	1,500
WP03D0911-00	DRF1014-151 __	150	1.0 / 1.0K	221	1,400
WP03D0912-00	DRF1014-181 __	180	1.0 / 1.0K	260	1,300
WP03D0913-00	DRF1014-221 __	220	1.0 / 1.0K	350	1,200
WP03D0914-00	DRF1014-271 __	270	1.0 / 1.0K	390	1,100
WP03D0915-00	DRF1014-331 __	330	1.0 / 1.0K	520	1,000
WP03D0916-00	DRF1014-391 __	390	1.0 / 1.0K	570	920
WP03D0917-00	DRF1014-471 __	470	1.0 / 1.0K	650	840
WP03D0918-00	DRF1014-561 __	560	1.0 / 1.0K	790	750
WP03D0919-00	DRF1014-681 __	680	1.0 / 1.0K	960	690
WP03D0920-00	DRF1014-821 __	820	1.0 / 1.0K	1,220	620
WP03D0921-00	DRF1014-102 __	1000	1.0 / 1.0K	1,600	520