



Feature

1. Unique configuration.
2. Ideal for EMI countermeasures.
3. Shapes and dimensions follow E.I.A. SPEC.
4. Excellent soldering ability and heat resistance.
5. High reliability.

Application

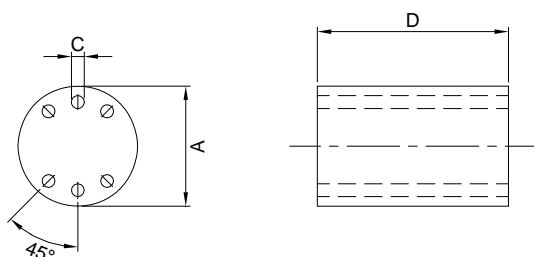
1. To eliminate EMI / RFI attenuation and suppression on electronic products.
2. Small VCRs, video cameras, hand-held TVS, DAT (digital audio tape)
3. Communication devices.
4. Portable electronic products.
5. Measuring instruments.

Product Identification

W R6H 0610 - 1.5T
1 2 3 4

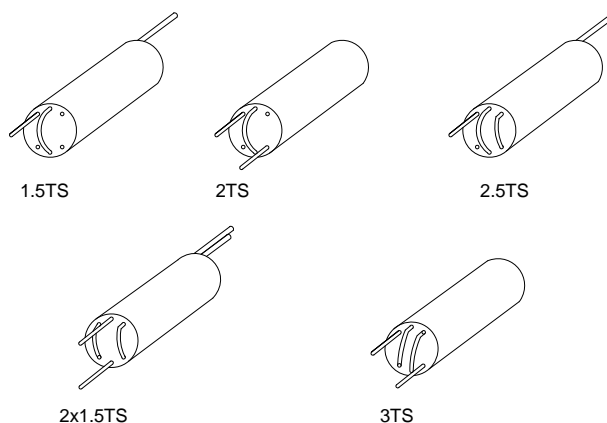
1. Lead-Free part number.
2. Series Name.
3. Dimension.
4. Wire turns.

Configurations & Dimensions



Unit: mm

Series Name	A	C	D
R6H0610	6.0 ± 0.4	0.8 ± 0.25	10.0 ± 0.4



Electrical Characteristics / R6H

System Number	Part Number	Impedance (Ω)				Wire Size (mm)
		10MHZ	25MHZ	100MHZ	200MHZ	
WP16D0101-00	R6H0610-1.5T	150	250	390	----	0.57
WP16D0102-00	R6H0610-2x1.5T	----	200	450	320	0.57
WP16D0103-00	R6H0610-2.0T	200	350	480	----	0.57
WP16D0104-00	R6H0610-2.5T	----	415	640	295	0.57
WP16D0105-00	R6H0610-3.0T	355	640	535	----	0.5