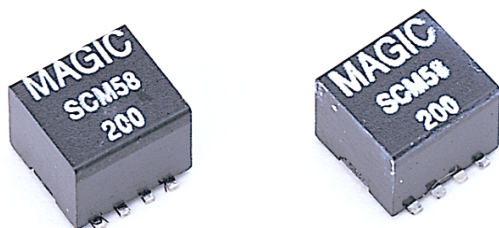


Feature

1. High common mode impedance in small size.
2. Effective for common mode noise suppression in digital equipment..
3. Encapsulate in heat-proof resin make high resistance to heat and mechanical shock.
4. Suitable for reflow soldering.



Application

1. SCM series is suitable for suppression of radiation noise in signal cables. The dual winding type common mode choke coil structure enables noise suppression without degrading the signal.
2. It can be used as a common mode filter for USB2.0 & IEEE1394.

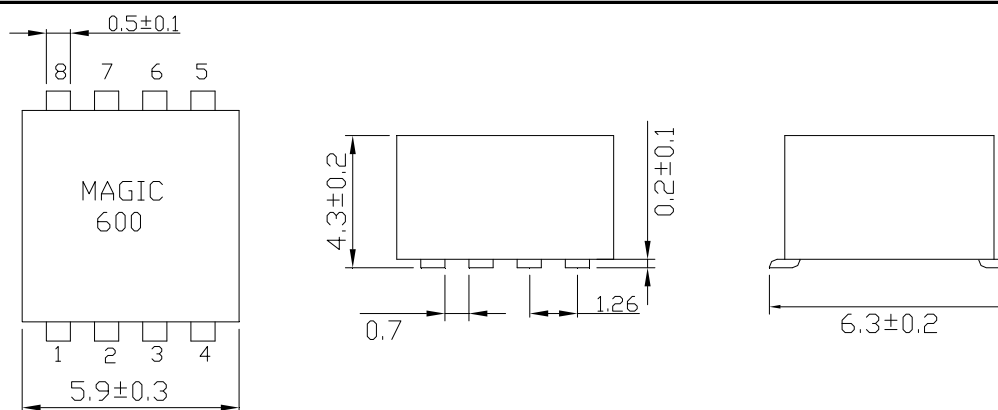
Product Identification

W SCM 0604 - 090

1 2 3 4

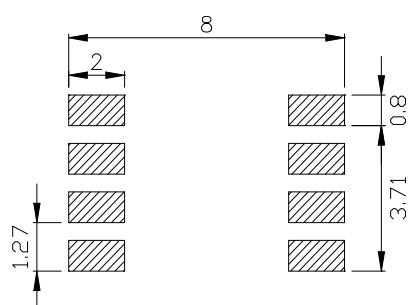
1. Lead-Free part number.
2. Series Name.
3. Dimension.
4. Impedance. (See Details)

Configurations & Dimensions

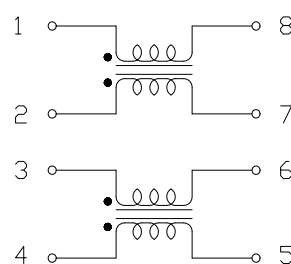


Unit: mm

Recommend PCB Layout & Schematic Diagram



PCB Layout



Schematic

Common Mode Filters - SMD / SCM Series

Electrical Characteristics / SCM0604

System Number	Part Number	Impedance (Ω)	Test Condition (Hz)	DC Resistance Max. (m Ω)	Rated Current Max. (mA)
WP56S0101-00	SCM0604-090	90 \pm 25%	100M	80	500
WP56S0102-00	SCM0604-200	200 \pm 25%	100M	90	500
WP56S0103-00	SCM0604-300	300 \pm 25%	100M	100	500
WP56S0104-00	SCM0604-600	600 \pm 25%	100M	120	500

Electrical Curve / SCM0604

