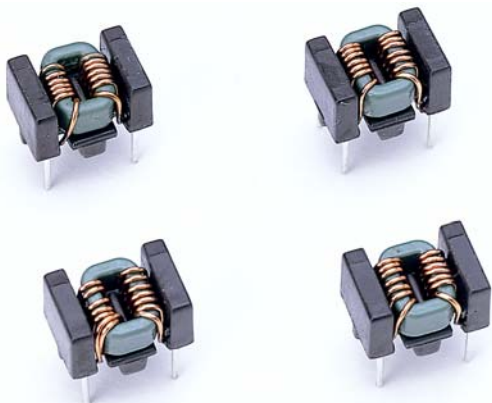


Common Mode Filters - DIP / QTB04 Series



Feature

1. Unique configuration.
2. Ideal for EMI countermeasures.
3. Shapes and dimensions follow E.I.A. SPEC.
4. Excellent soldering ability and heat resistance.
5. High reliability.

Application

Noise suppression for

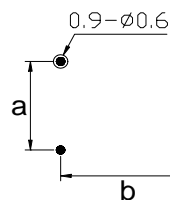
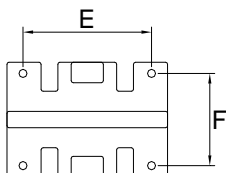
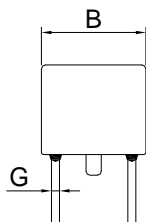
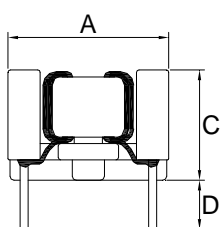
1. To eliminate EMI / RFI attenuation and suppression on electronic products.
2. Small VCRs, video cameras, hand-held TVs, DAT (digital audio tape)
3. Communication devices.
4. Portable electronic products.
5. Measuring instruments.

Product Identification

W QTB04 - 200
1 2 3

1. Lead-Free part number.
2. Series Name.
3. Impedance. (See Details)

Configurations & Dimensions



a	b
5.50	7.70

PCB Pattern

Series Name	A	B	C	D	E	F	G
QTB04	10.0±0.3	7.0±0.3	7.0±0.3	3.0±0.3	7.5±0.3	5.0±0.3	0.6 typ.

Unit: mm

Electrical Characteristics / QTB04

System Number	Part Number	Inductance (μ H)	Impedance Min.(Ω)	DC Resistance Max. (m Ω)	Rated Current Max. (mA)
WP14D0101-00	QTB04-6R7	6.7 typ.	600 / 100MHz	18	800
WP14D0102-00	QTB04-7R7	7.7 typ.	800 / 100MHz	18	800
WP14D0103-00	QTB04-120	12.0 typ.	1000 / 100MHz	20	500
WP14D0104-00	QTB04-270	27.0 typ.	1200 / 100MHz	20	500