



Feature

1. One hole rod-type
2. Excellent heat resistance.
3. Available in various sizes & 4 materials
4. High reliability.

Application

E.M.I. Suppression on round cable...

1. Computer and peripheral products
2. Consumer electronic products
3. Communication electronic products
4. Measuring instruments

Product Identification

SRH 35 28 R
1 2 3 4

1. Series name

2. Inside Dia.

3. Outside Dia.

4. Case type

R: Round shape

S: Square shape

Configurations

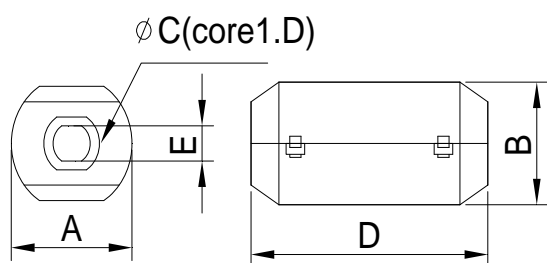


Fig.1

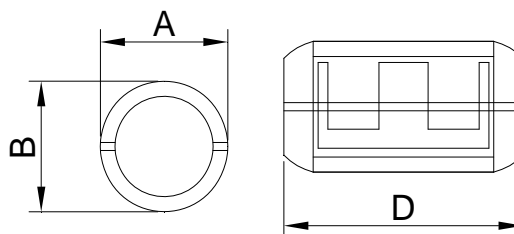


Fig.2

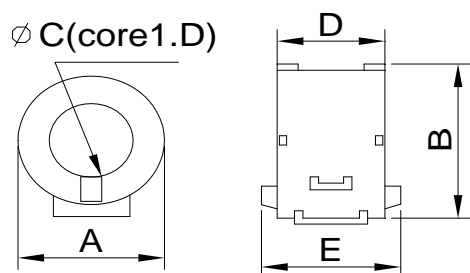


Fig.3

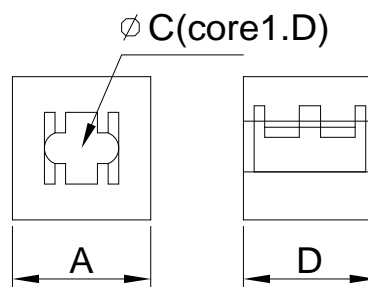


Fig.4

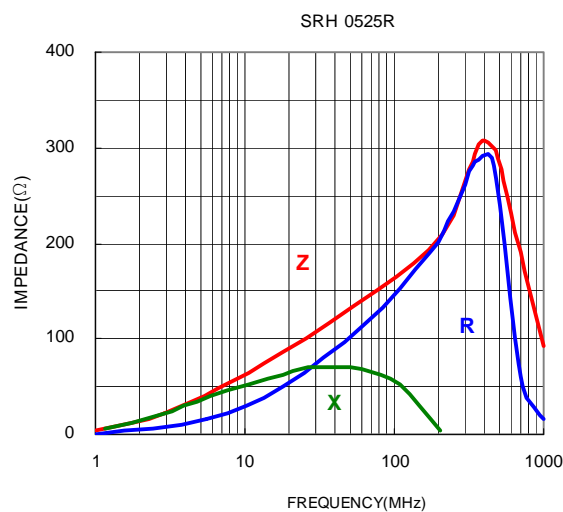
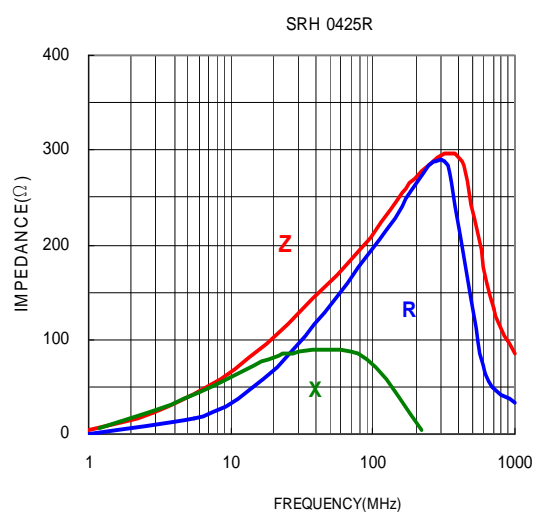
EMI Ferrite Core / SRH Series

Electrical Characteristics / SRH Series

Part Number	Fig	DIMENSIONS (UNIT : mm)					IMPEDANCE (Ω)	
		A	B	C	D	E	25MHZ	100MHZ
SRH 0425R	2	15.0 \pm 1.0	15.0 \pm 1.0	4.0 \pm 0.2	25.2 \pm 1.0	—	55	95
SRH 0525R	1	13.0 \pm 1.0	11.8 \pm 1.0	5.0 \pm 0.3	25.5 \pm 1.0	2.5	60	100
SRH 5229R	2	16.5 \pm 1.0	16.5 \pm 1.0	5.2 \pm 0.3	29.5 \pm 1.0	—	70	120
SRH 7539R	2	21.0 \pm 1.0	21.0 \pm 1.0	7.5 \pm 0.3	39.0 \pm 1.0	—	90	150
SRH 0730R	1	17.0 \pm 1.0	15.0 \pm 1.0	7.0 \pm 0.3	30.0 \pm 1.0	2.5	80	135
SRH 8120R	3	19.5 \pm 1.0	23.0 \pm 1.0	8.1 \pm 0.3	20.0 \pm 1.0	26.0 \pm 1.0	50	110
SRH 5223S	4	15.0 \pm 1.0	14.0 \pm 1.0	5.2 \pm 0.3	23.0 \pm 1.0	—	70	120
SRH 6533S	4	20.5 \pm 1.0	20.0 \pm 1.0	6.5 \pm 0.3	33.0 \pm 1.0	—	120	200
SRH 1033S	4	25.5 \pm 1.0	23.5 \pm 1.0	10.0 \pm 0.3	33.0 \pm 1.0	—	80	130
SRH 1333S	4	31.5 \pm 1.0	30.0 \pm 1.0	13.0 \pm 0.3	33.0 \pm 1.0	—	105	170
SRH 0718S	5	15.5 \pm 1.0	14.0 \pm 1.0	7.0 \pm 0.3	18.0 \pm 1.0	22.0 \pm 1.0	40	75

EMI Ferrite Core / SRH Series

Electrical Curve / SRH Series



Electrical Curve / SRH Series

