



Feature

1. Excellent heat resistance.
2. Available in various sizes & materials.
3. High reliability.

Application

E.M.I. Suppression on flat cable assemblies.

1. Computer and peripheral products
2. Consumer electronic products
3. Communication electronic products
4. Measuring instruments

Product Identification

ZP **16** x **12** x **4.5**
1 **2** **3** **4**

1. Series name.

2. Dia.A.

3. Dia.D.

4. Dia.C.

Configurations

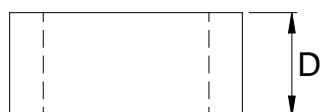
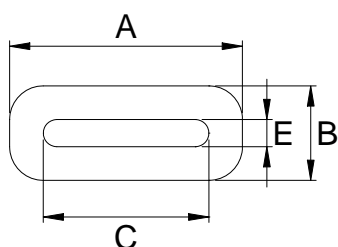


Fig 1

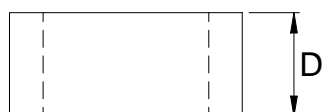
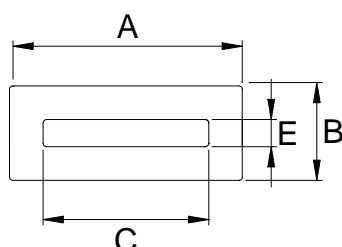


Fig 2

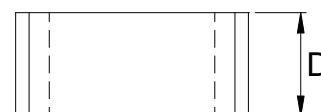
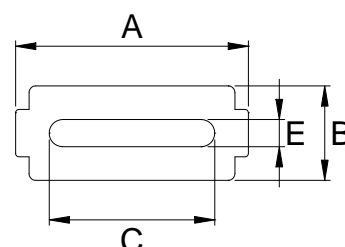


Fig 3

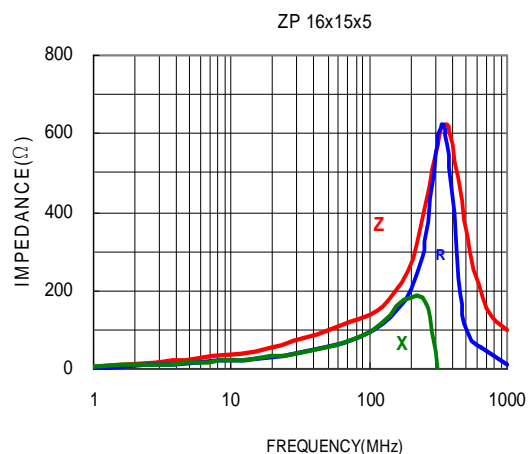
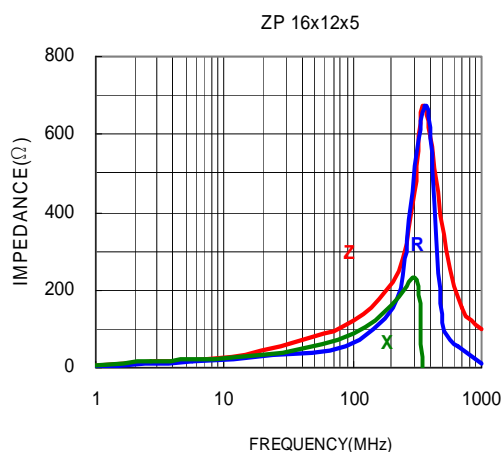
Electrical Characteristics / ZP Series

Part Number	Fig	DIMENSIONS (UNIT : mm)					IMPEDANCE (Ω)	
		A	B	C	D	E	25MHZ	100MHZ
ZP 16 x12x5	1	16.0 ± 0.4	5.0 ± 0.3	11.5 ± 0.4	12.0 ± 0.5	0.5+0.6/-0.1	44	90
ZP 16 x 20 x 5	1	16.0 ± 0.4	5.0 ± 0.3	11.5 ± 0.4	20.0 ± 0.6	0.5+0.6/-0.1	50	110

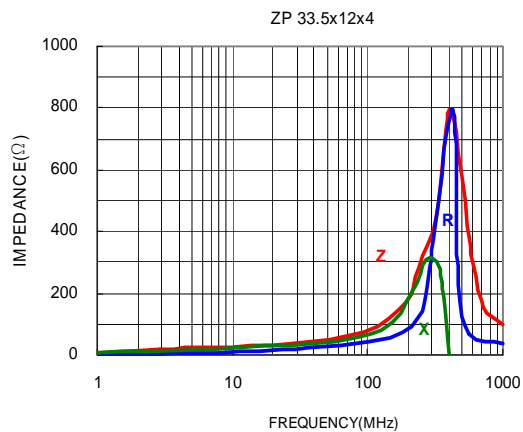
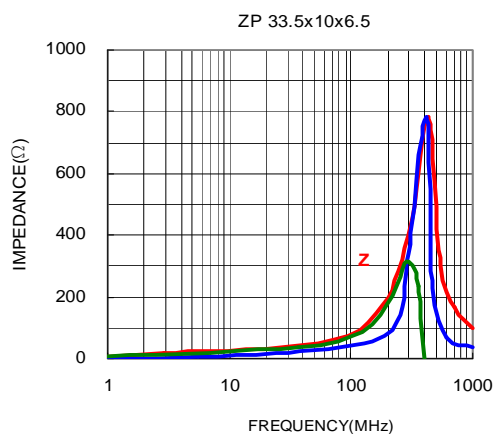
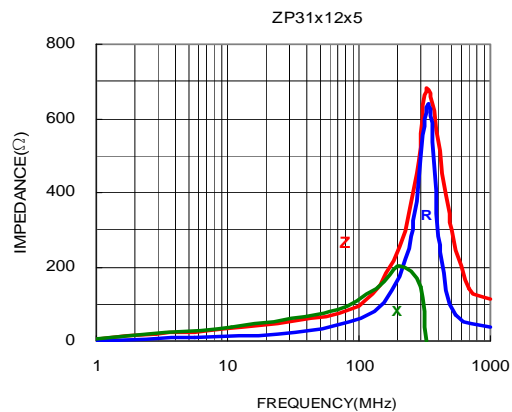
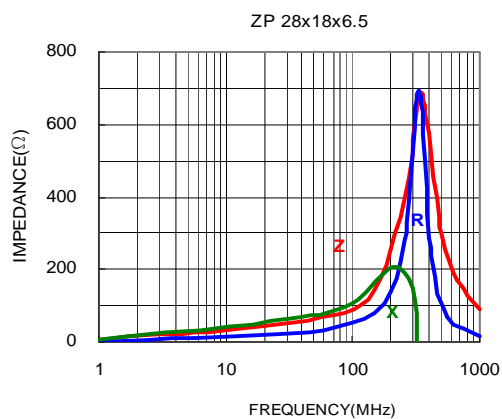
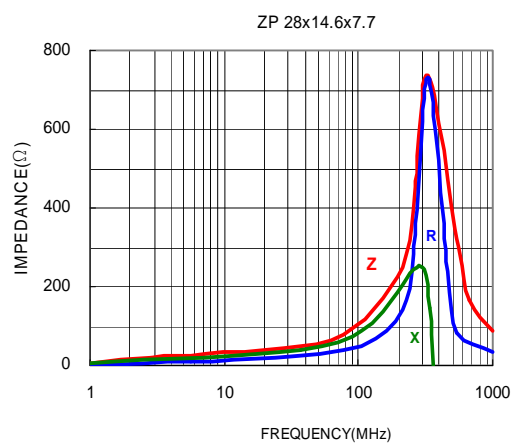
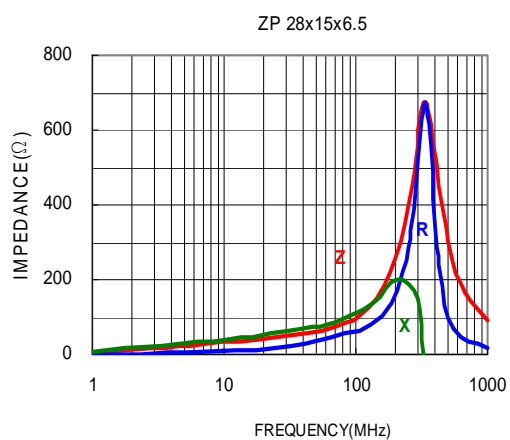
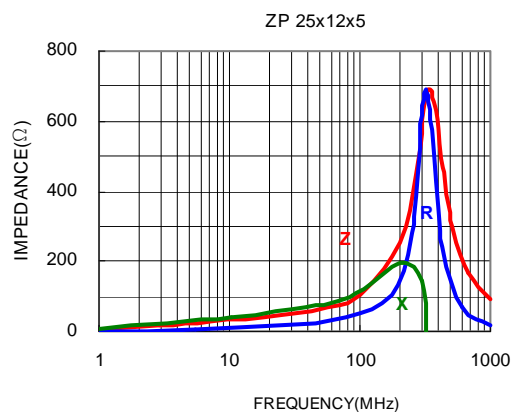
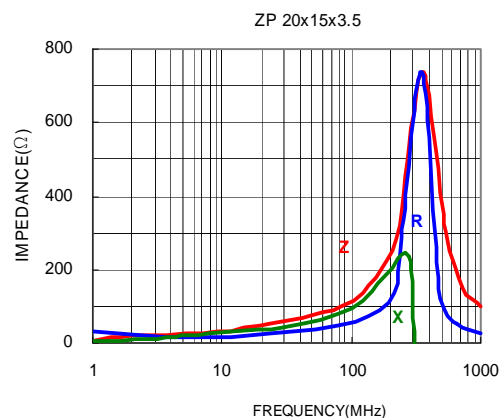
Electrical Characteristics / ZP Series

Part Number	Fig	DIMENSIONS (UNIT : mm)					IMPEDANCE (Ω)	
		A	B	C	D	E	25MHZ	100MHZ
ZP 20.5 x 15 x 3.5	1	20.5 ± 0.5	3.5 ± 0.3	16.5 ± 0.4	15.0 ± 0.6	0.50 ± 0.2	34	88
ZP 23.3 x 7x 3	2	23.3 ± 0.7	3.0 ± 0.3	20.0 ± 0.5	7.0 ± 0.4	0.9 ± 0.3	20	60
ZP 23.5 x 10 x 6.3	2	23.5 ± 0.7	6.3 ± 0.5	18.4 ± 0.4	10.0 ± 0.4	1.1 ± 0.3	32	75
ZP 25 x 12 x 5	1	25.0 ± 0.7	5.0 ± 0.4	21.0 ± 0.5	12.0 ± 0.5	1.3 ± 0.2	27	75
ZP 28 x14.6 x 7.7	3	28.0 ± 0.8	7.7 ± 0.5	23.0 ± 0.5	14.6 ± 0.4	1.4 ± 0.4	38	85
ZP 28 x15 x 6.5	1	28.0 ± 0.8	6.5 ± 0.5	23.0 ± 0.5	15.0 ± 0.6	1.0 ± 0.3	30	85
ZP 28.5 x 18 x 6.5	1	28.5 ± 0.8	6.5 ± 0.5	23.5 ± 0.5	18.0 ± 0.7	1.0 ± 0.3	40	95
ZP 31 x12 x 5	1	31.0 ± 0.8	5.0 ± 0.4	27.0 ± 0.6	12.0 ± 0.5	0.5+0.7/-0.1	30	85
ZP 33.5 x 10 x 6.5	1	33.5 ± 0.9	6.5 ± 0.5	27.0 ± 0.6	10.0 ± 0.4	1.4 ± 0.4	24	65
ZP 33.5 x 15 x 6.5	1	33.5 ± 0.9	6.5 ± 0.5	27.0 ± 0.6	15.0 ± 0.6	1.4 ± 0.4	32	81
ZP 45.1 x 10 x 12.5	2	45.1 ± 1.0	12.5 ± 0.6	34.5 ± 0.8	10.0 ± 0.4	1.5 ± 0.5	30	72
ZP 45.1 x 28.6x 12.5	2	45.1 ± 1.0	12.5 ± 0.6	34.5 ± 0.8	28.6 ± 0.8	1.5 ± 0.5	80	168
ZP 49.6 x 12 x 6.5	1	49.6 ± 1.0	6.5 ± 0.5	44.0 ± 0.8	12.0 ± 0.5	1.4 ± 0.4	22	68
ZP 57.6 x 12 x 6.5	1	57.6 ± 1.2	6.5 ± 0.5	52.0 ± 1.0	12.0 ± 0.5	1.4 ± 0.4	22	70

Electrical Curve / ZP Series



Electrical Curve / ZP Series



Electrical Curve / ZP Series

